

# INTERNATIONAL ELECTROTECHNICAL COMMISSION

## IEC 60205 Edition 4.0 2016-11

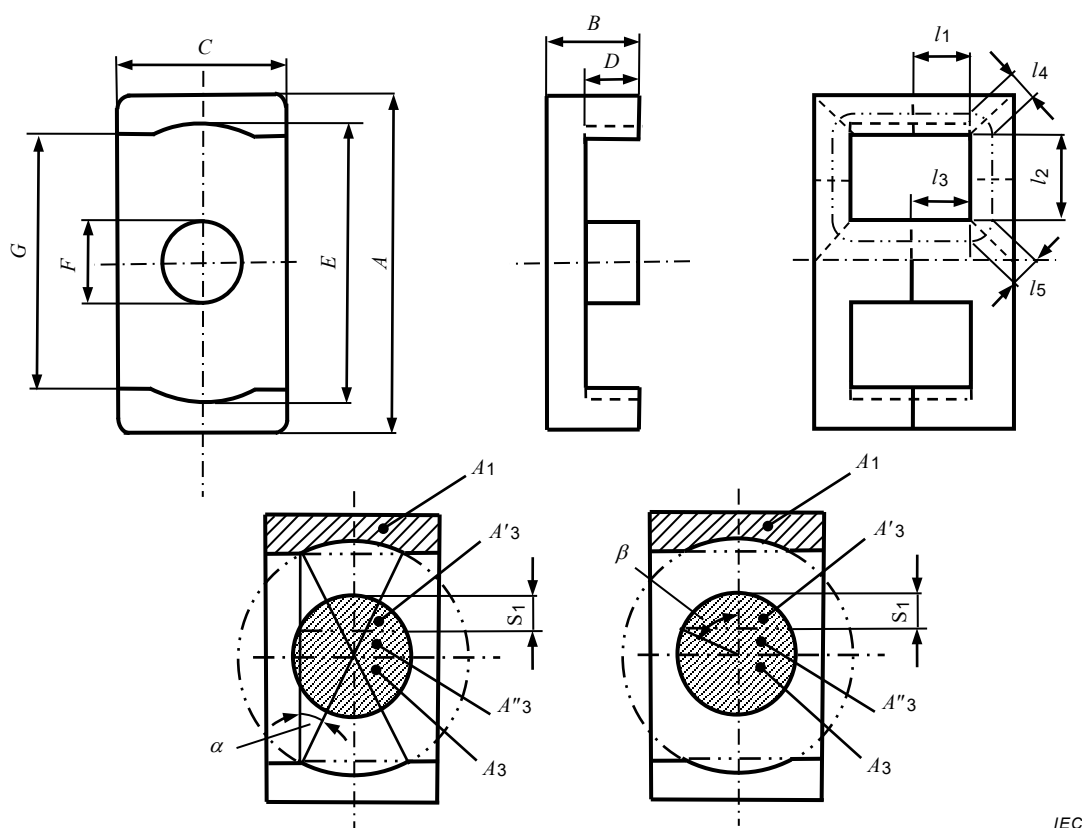
### CALCULATION OF THE EFFECTIVE PARAMETERS OF MAGNETIC PIECE PARTS

## CORRIGENDUM 1

### 5.11 Pair of ER-cores (low profile)

#### Figure 12 – Pair of ER-cores (low profile)

Replace Figure 12 with the following:



IEC

Replace, in the paragraph starting with "The condition to obtain  $A'_3 = A''_3$  is", the first formula with the following:

$$S_1 = \frac{1}{2} F (1 - \cos \beta) = 0,29801 F$$